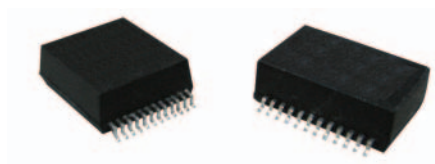


10/100/1000 Base-T Transformers

Surface Mount Single Port Transformer Modules



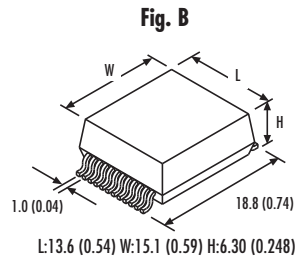
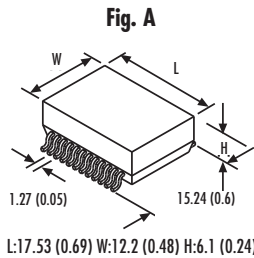
- Complies with IEEE 802.3 Standards
- Inductance of 350µH min at 8mA Bias
- Hi-Pot 1500Vrms (Pri:Sec)
- Designed to work with a variety IC's
- Enhanced Common Mode attenuation

Electrical Specification @ Ta=25°C

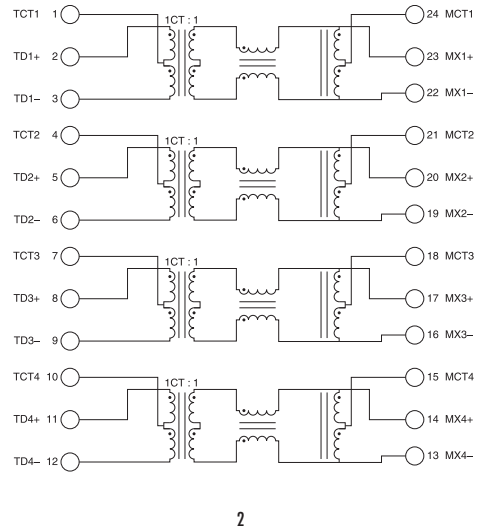
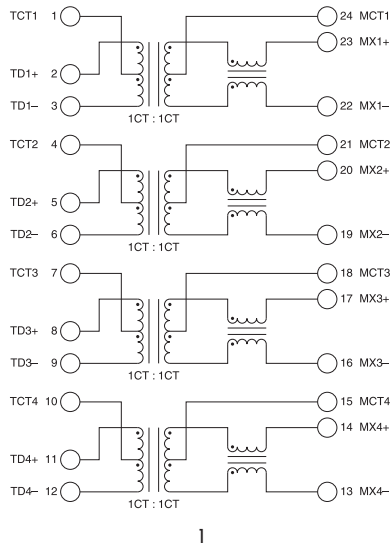
Part #	Turns Ratio		Insertion Loss (0.1-100 MHz) (dB MAX.)	Return Loss (@ 80 MHz) (dB MAX.)	Common Mode Rejection (0.1 - 100 MHz) (dB MIN.)	Cross Talk (0.1 - 100 MHz) (dB MIN.)	Extended Description	Mounting	Package Fig.	Schematic Fig.
	Rx	Tx								
TTC-8135	1ct:1ct	1ct:1ct	-1.00	-10	-30	-35	4 Channel Tx/Rx	24 Pin SOIC	A	1
TTC-8136	1ct:1ct	1ct:1ct	-1.00	-10	-30	-35	4 Channel Tx/Rx x/AutoXfmr	24 Pin SOIC	A	2
TTC-8137	1ct:1ct	1ct:1ct	-1.00	-10	-30	-35	4 Channel Tx/Rx x/AutoXfmr	24 Pin 1mm	B	2
TTC-8138	1ct:1ct	1ct:1ct	-1.00	-10	-30	-35	4 Channel Tx/Rx	24 Pin 1mm	B	1

Mechanical Dimensions

All dimensions are typical, please contact Tamura for tolerances and suggested layout information.



Schematics



TAMURA CORPORATION

43352 Business Park Drive. | P.O. Box 892230 Temecula, CA 92589-2230 | www.tamuracorp.com

USA

Tel: 800-872-6624
Fax: 909-676-9482

Japan

Tel: 81 (0)3 3978-2111
Fax: 81 (0)3 3923-0230

United Kingdom

Tel: 44 (0) 1380 731 700
Fax: 44 (0) 1380 731 702

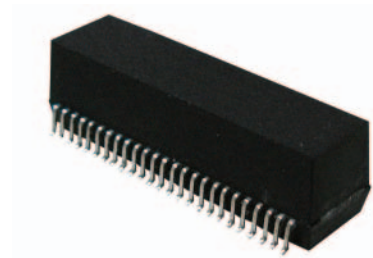
Hong Kong

Tel: 852-2389-4321
Fax: 852-2341-9689

10/100/1000 Base-T Transformers

Surface Mount Dual Port Transformer Modules

- Complies with IEEE 802.3 Standards
- Inductance of 350 μ H min at 8mA Bias
- Hi-Pot 1500Vrms (Pri:Sec)
- Auto MDI/MDIX Compatible
- Enhanced Common Mode attenuation
- Designed to work with a variety IC's

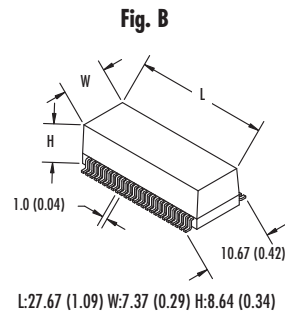
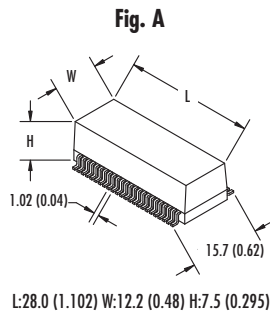


Electrical Specification @ Ta=25°C

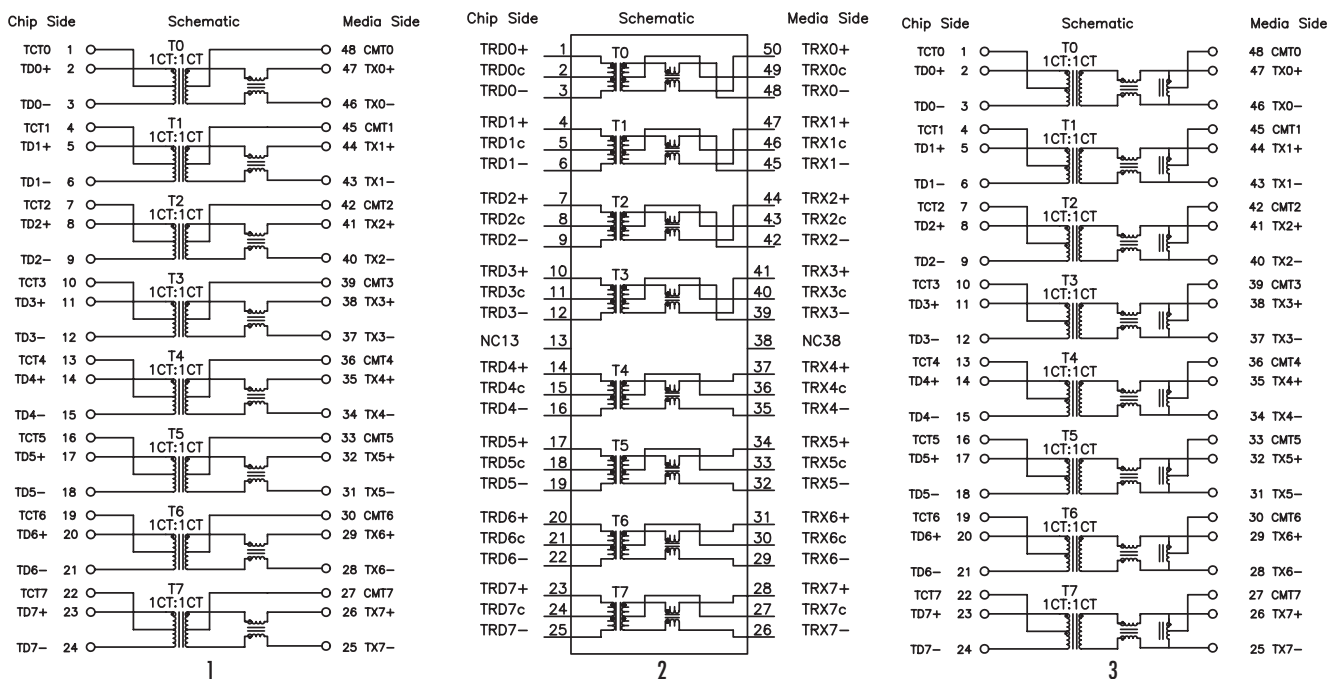
Part #	Turns Ratio		Insertion Loss (0.1-100 MHz) (dB MAX.)	Return Loss (dB MAX.)		Common Mode Rejection (0.1 - 100 MHz) (dB MIN.)	Cross Talk (0.1 - 100 MHz) (dB MIN.)	Package Fig.	Schematic Fig.
	Tx	Rx		1-30MHz	80MHz				
TTC-8156	1CT:1CT	1CT:1CT	-1	-18	-12	-30	-30	A	1
TTC-8172	1CT:1CT	1CT:1CT	-1	-18	-12	-30	-30	B	2
TTC-8173	1CT:1CT	1CT:1CT	-1	-18	-12	-30	-30	A	3

Mechanical Dimensions

All dimensions are typical, please contact Tamura for tolerances and suggested layout information.



Schematics



TAMURA CORPORATION

43352 Business Park Drive. | P.O. Box 892230 Temecula, CA 92589-2230 | www.tamuracorp.com
 USA | Japan | United Kingdom | Hong Kong
 Tel: 800-872-6624 | Tel: 81 (0)3 3978-2111 | Tel: 44 (0) 1380 731 700 | Tel: 852-2389-4321
 Fax: 909-676-9482 | Fax: 81 (0)3 3923-0230 | Fax: 44 (0) 1380 731 702 | Fax: 852-2341-9689